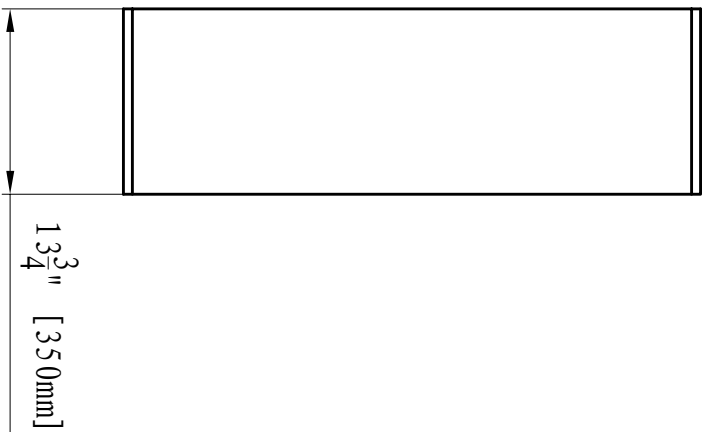
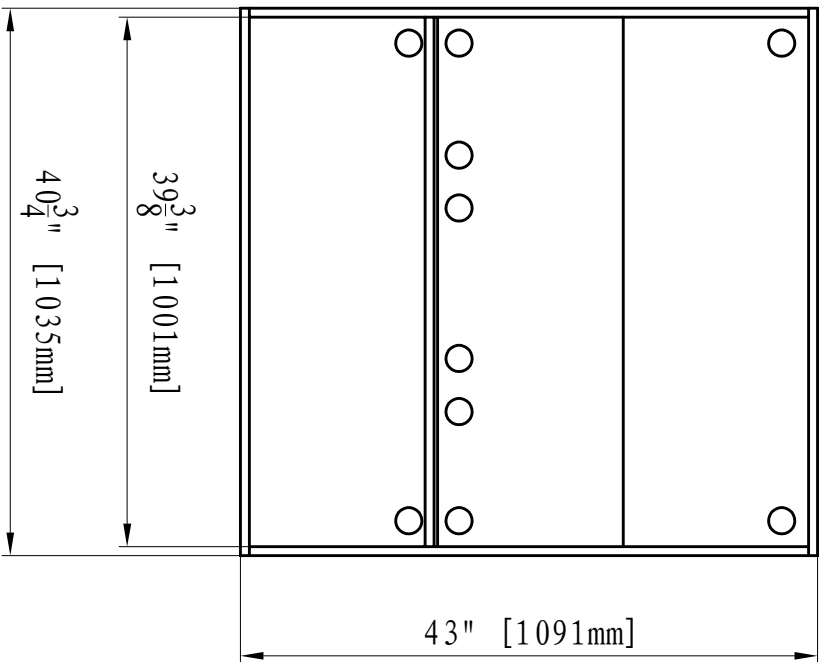


**TECHNICAL SPECIFICATIONS**

Net	49.60Lbs/22.5 Kg
Gross	55.12Lbs/25 Kg
HEIGHT WIDTH DEPTH	43"×40 3/8"×13 3/4"
SHIPPING SIZE(H*W*D)	8 1/2"×44 1/2"×17 3/8"
Max. load on metal stand	110.23Lbs/50 Kg



*Amantii*

<i>Amantii</i>		
SERIES	MODEL	REV.
METAL STAND	TRD-38-BLK-PDS	1
SCALE	DATE: 7/24/2023	SHEET 1 OF 1